



Glossopdale

School & Sixth Form



The school has high expectations for all pupils, including those with special educational needs and/or disabilities (SEND). The aim is that pupils 'thrive' and show tenacity, hard work, responsibility, independence, vision and excellence. Most pupils demonstrate these characteristics.

Ofsted 2023





Welcome to our prospectus

Welcome to Glossopdale School & Sixth Form. We are a popular, caring and successful school and our core purpose is to support students of all abilities and backgrounds to develop high aspirations and achieve their full potential.

We have the highest expectations of students; every student is expected to work hard, behave well and contribute positively to the school community. Our mission is to develop in each of our students the academic skills, learning habits, values and character traits necessary to thrive.

*The school's curriculum
is ambitious and has
been carefully designed*

OFSTED 2023

Students will experience a broad and balanced curriculum as well as benefiting from a range of wider opportunities which will serve to enrich their lives and prepare them for their future pathways.

Students at Glossopdale are cared for by a strong pastoral and inclusion team who go above and beyond to make sure they feel safe and belong. Ofsted always comment on the strong relationships between staff and students:

*Students develop
positive relationships
with their teachers.
They feel safe.*

OFSTED 2023

We are delighted that you are considering Glossopdale as the next step for your child and hope that they will soon become a part of our school community.



Glossopdale

School & Sixth Form

We are...

Tenacious

We don't give up easily and have a 'can do' attitude

Hard Working

We try our best and aim high

Responsible

We are kind and caring towards others and value our community

Independent

We are self-reliant and well-organised

Visionary

We are curious and thoughtful, we can think outside the box

Excellent

We are committed to the highest standards in everything we do

We are...

A Tenacious Community

High Expectations

At Glossopdale School, student behaviour and attitudes are 'Good' (Ofsted 2023). We are Tenacious about adopting a whole-school approach to maintaining high standards of behaviour that reflect the values of the school. We utilise a research based approach to develop and implement the most effective strategies to create a culture of high expectations for the conduct, attitude and attendance of all our students. This has proven to have a profound benefit for both staff and students, establishing calm, safe and supportive environments conducive to learning.

Excellent conduct and excellent academic performance go hand in hand. We appreciate the positive impact that high standards for behaviour has on students learning in the classroom. We 'teach, not tell' students the importance of positive behaviour so that they develop essential social, emotional and behaviour skills that allow them to THRIVE, both in the classroom and beyond. We recognise excellent conduct in every lesson, narrating the conduct we expect to see and awarding lots of Thrive Points, so that all students can both enjoy and succeed in their learning.

'Pupils who expressed a view said that they are not worried about bullying. They share concerns with staff and trust them to take effective action'

OFSTED 2023

Bullying behaviour of any sort will not be tolerated at Glossopdale School. Any incidents of bullying are dealt with swiftly and effectively, with appropriate sanctions implemented to deter further incidents. Any student subject to bullying behaviour is supported effectively and all students are provided with extensive education on the impacts of bullying and our zero tolerance policy regarding such behaviour.

At Glossopdale School, we have high expectations for attendance as well as conduct. There is clear evidence that highlights the impact that excellent attendance has on student achievement. Not only does it contribute to high attainment, but attending school every day also supports students to develop the effective personal and social skills needed to succeed in the wider working world. We ensure that students with excellent and/or improved attendance are appropriately recognised for their achievements, and provide tailored support and intervention for students presented with barriers to achieving full attendance.

We also recognise some students may need support with their conduct, attendance, academic progress and wellbeing. Where students need support we have an extensive pastoral care network. A team of Form Tutors, Year Managers and Heads of Year provide a wealth of experience to support your child through the journey at Glossopdale.. Our Pastoral Support Team effectively monitors, assesses and supports students on a day to day basis to ensure that they can focus solely on their most important activity in school; their learning. In addition to our Pastoral Support Team, we also employ a Family Support Team and have access to trained Mental Health professionals, as well as working closely with a range of external agencies, allowing us to provide effective support for every student and family should they require it.

We are...

A Hard-working Community

High Expectations

We have high expectations for every student at Glossopdale School, and we encourage everyone to be highly ambitious for themselves. Our curriculum is designed to support this with content in all subjects designed to stretch, challenge and inspire students. We know that when students are thinking hard, they are learning.

Our curriculum offer is broad and balanced, from Key Stage 3 to Key Stage 5. We offer a rich variety of subjects that enables students to have the widest possible choice of future pathway. At Key Stage Three, our students study fourteen different subjects on a weekly basis. In Year 9 students tailor their curriculum by selecting their qualification courses which include traditional GCSE subjects in English, Maths, Sciences, Humanities, Languages, Arts and Technology as well as more vocational and technical courses in Sport, Performing Arts, Social Sciences, Business and Catering. Across all subjects, we want students to be excited and enthused, to express themselves confidently and eloquently and to rigorously expect the best academic standards of themselves.

We know that a determined focus on excellent progress and grades opens pathways for students into Post-16 education, University and beyond. In school, every student's progress is tracked regularly and parents receive regular reports. These detail the performance in each subject, and, crucially, their next steps in meeting the curriculum goals. We hold a Parents' Information Evening each year where curriculum content, study skills and key information is shared to support each child's progress at home. We also hold an annual Parents' Evening where we discuss individual strengths and targets.

We want Glossopdale School to be the place where students find their passion and set their goals. In addition to the subject curriculum we have an extensive Personal Development curriculum:

"In morning meetings, 'beliefs and values' lessons and assemblies, pupils study topics related to their personal development. They learn about respecting others and about the protected characteristics. Pupils contribute to the life of the school by becoming mental health champions. They attend careers fairs to consider their options when they leave school."

OFSTED 2023





We are...

A Responsible Community

High Expectations

We strive for excellence in every aspect of our school and all of our students are encouraged to achieve their full potential. Our lesson and behaviour routines enable students to be the best they can be and we believe excellence is a habit which should pervade every aspect of our school day. The character curriculum is taught as part of the Personal Development programme and this focuses closely on students developing our THRIVE values - both for school and future life.

Our students are our best advocates and our most honest spokespeople. We trust in them to offer critical feedback and involve them in the organisation of the school. There is a rich selection of leadership opportunities available to students, from Subject, Anti-Bullying and Wellbeing Champions, to Student Council members, Prefects and Our Student Leadership Team. All of these positions carry prestige and prominence within the school, and help us to develop and improve with their valuable input.

We also have an ASPIRE programme which includes rich and varied opportunities for students to develop their intellectual skills and nurtures their personal ambition to aim high; both now and in their future pathways. Opportunities such as: Duke of Edinburgh Award, University visits, working with our Sixth Formers to develop their deep thinking skills, stretch and challenge events within faculties are all designed to enable students to be the best they can be, every day: in every way.





We are...

An Independent Community

Wider Opportunities

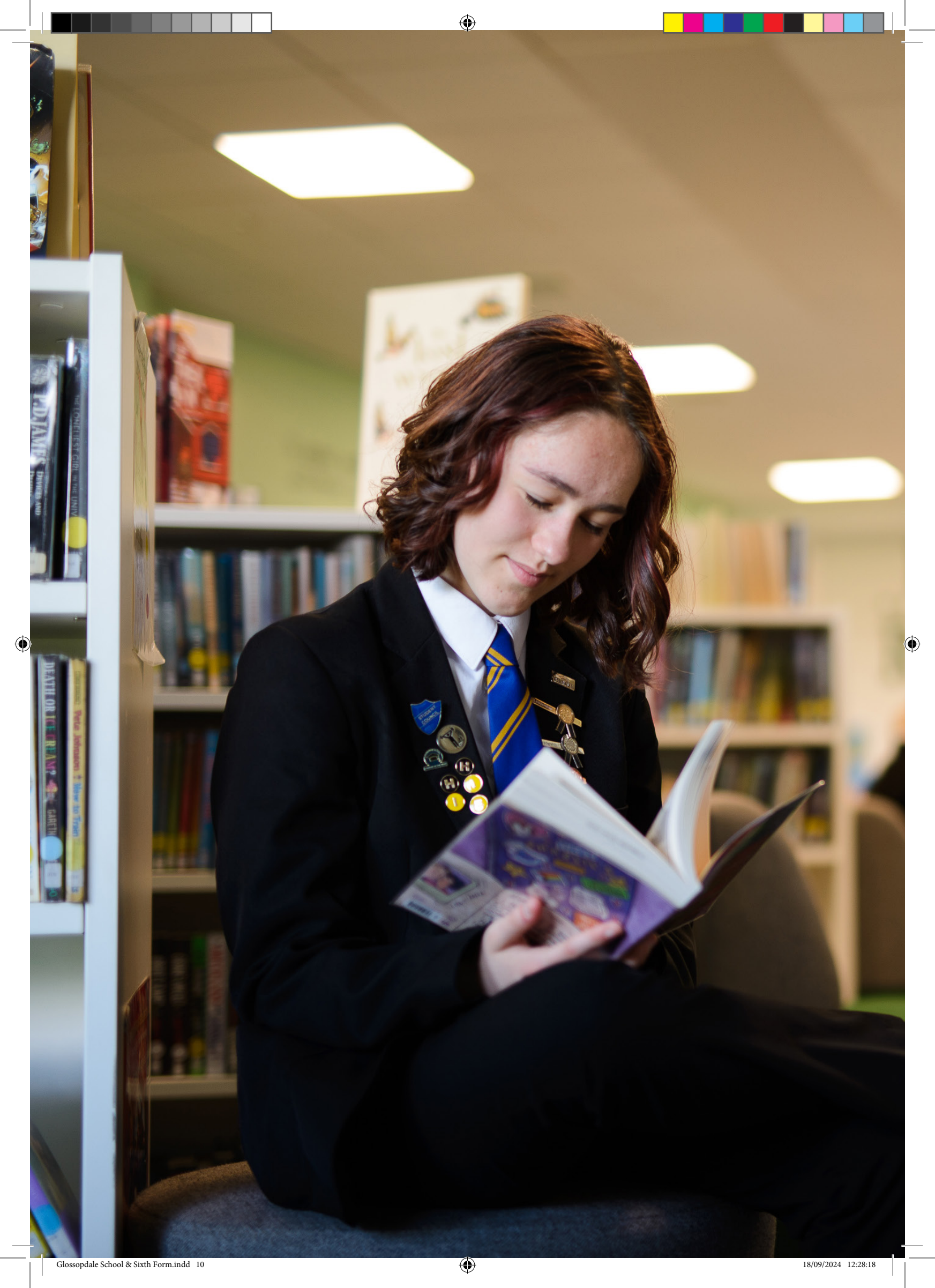
Our students are encouraged to think creatively in all aspects of their learning, to develop enquiring and creative minds and to build positive attitudes about themselves. Students are encouraged to take part in a range of visits in the UK and abroad; to enrich learning and offer opportunities for cultural capital and broadening life experiences.

We are proud of our competitive sports' teams in football, rugby, basketball, netball and hockey and also offer our students a full range of recreational sporting activities. Our partnership with The Place, our on site community centre, allows us to provide a wide range of indoor and outdoor sports for students to pursue during and after the school day. Glossopdale School has a vibrant music and performing arts scene, with a range of music ensembles, concert and drama performances and recent appearances in finals of the National Music for Youth competition. The quality of our performing arts is of an extremely high standard and research shows that involvement in this, and The Arts subjects being part of the curriculum, has a positive impact on learning across all subjects and the school as a whole.

'Pupils benefit from a range of wider opportunities. They take part in football, netball and dance clubs. Over one hundred pupils are currently volunteering to raise money for a trip to Kenya where they will take part in community work. During the inspection, local primary schools visited to watch the school production of 'Frozen'. Pupils develop their leadership skills by taking part in the school council. They organise bake sales for charity. Sixth-form students support younger pupils in lessons and welcome visitors at school events.'

OFSTED 2023





We are...

A visionary Community

Reading and Literacy

'Reading is prioritised. Pupils make good use of the library. Well-trained staff provide effective support to those who need help to become more fluent readers.'

OFSTED 2023

At Glossopdale, reading and literacy hold a paramount position, acknowledging their fundamental contributions to students' academic accomplishments and personal growth. Recent research conducted by organisations such as the National Literacy Trust underscores the pivotal role of literacy skills in shaping students' future prospects. Proficient reading abilities not only correlate with academic success across various subjects but also significantly influence individuals' socioeconomic opportunities and overall well-being. By fostering a robust culture of reading, Glossopdale School and Sixth Form equips its students with indispensable tools to navigate today's increasingly complex world, nurturing critical thinking, empathy, and cultural understanding through initiatives like book clubs, author visits, peer reading, and integrated literacy programs across the curriculum. At Glossopdale, reading transcends mere skill; it serves as a gateway to boundless possibilities, empowering students to excel academically and thrive personally in an ever-evolving society.

Our commitment to promoting reading is ingrained in the very fabric of our academic culture at Glossopdale. Through engaging events such as World Book Day and two dedicated Reading Weeks annually, we infuse our student body with enthusiasm for literature. Furthermore, our structured literacy education approach is exemplified by our Accelerated Reader programme, where students engage with a diverse array of texts tailored to their individual reading levels, fostering both comprehension and a genuine love for reading. This initiative not only enhances students' literacy skills but also nurtures a lifelong habit of exploration and discovery through books.

Our library serves as a vibrant hub of learning and literary exploration. Our commitment to fostering a love of reading is evident through meticulously curated book lists catering to diverse interests and age groups, from KS2/3 to KS4. Furthermore, student involvement is integral to our library's dynamism; every year, we welcome student librarians from Year 7 to 11, alongside our dedicated Reading Ambassadors. These enthusiastic individuals spearhead initiatives such as installing thematic bookshelves and subject-specific reading lists in classrooms, enriching the academic environment. Additionally, prominently displayed Staff favourite Books showcase the literary passions of our educators, inspiring both students and colleagues alike to explore new literary realms and deepen their appreciation for the written word.



We are...

An Excellent Community

Close Community

We believe that as the children join us at Glossopdale in Year 7, the whole family becomes part of the Glossopdale School and Sixth Form Community. Our communication with parents/carers is frequent, with a weekly newsletter celebrating notable events and reminding of upcoming dates for your diary. We also send a half-termly celebration bulletin, where you will be able to see the wide range of events, sporting fixtures, fundraising and other exciting celebrations we like to share with everyone. Our Facebook, Instagram and Twitter are updated regularly and you can see what a vibrant community we are with regular updates and notices reflecting our busy school days.

Student leaders run MacMillan Coffee mornings each September, to which all members of the local community are invited and we have many Key Stage 3 students who are junior sports leaders at local primary schools activities on the Astroturf pitch. We enjoy excellent relationships with parents/carers who feed back to us that working in partnership together undoubtedly leads to positive outcomes for their children.

Parental Feedback

“What I love about Glossopdale is that there is a real concern for the whole of the student.”

“(The school has) structures and systems in place to care for students pastorally... and provide support for them.”





Nurturing Transition

Transferring to a secondary school can be both exciting and daunting for children. We enjoy excellent relationships with all our partner schools and the children regularly take part in activities - such as sports tournaments, dance workshops and watching our performances here at Glossopdale throughout their primary education - so our building and excellent facilities are already familiar to many of the local children.

We work closely with parents during the transition year and have highlighted some key aspects of our transfer programme which is specially designed to raise the confidence of our upcoming students

This programme includes:

- Dedicated transition section of our website www.glossopdale.school
- Visits to your child's primary school to meet the children and gather information from Year 6 teachers
- Regular 'moving up' newsletter for Y6 parents in the lead up to September start
- Transition Evening for Year 6 parents where you will meet your child's tutor
- Induction Day held each year on the first friday in July
- Year 6 Transition events beginning with a range of extra-curricular opportunities offered in the Summer Term
- A Parent Information Guide which will also be provided on the Transition Evening including important information about uniform, ParentPay, Rewards and our standards and expectations

SEND and Inclusion

We are proud that Glossopdale is an inclusive school and welcomes students who have a wide range of additional needs. A range of adaptive teaching techniques are used in lessons to meet the demands of different subjects and different interests and aptitudes of our students. We do not remove students from subject areas as we believe in an inclusive curriculum for all. We have a very experienced support team who ensure appropriate help is available both within lessons and through smaller group or individual work. Interventions and provisions take place both onsite and externally. These are planned according to need and currently include English, Literacy, Maths, Science, Social Skills, Pet Therapy, Art Mentoring, Unit awards, ASDAN, Zones of Regulation, ELSA, Nurture Groups, Physiotherapy and Sensory sessions. Further provisions will be developed as needs arise.

The SEND Team also organise and facilitate off site provisions such as Hydrotherapy, Whitehall and Animal Therapy.

We believe that SEND (Special Educational Needs and/or Disability) is not about a label or diagnosis; it is defined by a student's presentation of need and the amount of support that is needed to help them to make progress in their education and achieve their full potential.

We recognise that each student is unique and therefore the support that they require should be personalised to their needs. Our transition programme for SEND students involves working closely with primary SENCOs, visits to primaries and a planned extensive transition

We work closely with students, parents/carers and outside agencies to:

- Create an environment in which students with SEND can fulfil their potential and develop independence in preparation for adulthood.
- Enable students with SEND to function as independently as possible within the school environment and the outside world
- Create a partnership in which the school, home and other agencies work together for the benefit of students with SEND.

We hold regular SEND Parent Forums to pass on information about SEND at Glossopdale and also to offer training/advice to parents. This is also a good opportunity for parents to network and share support and advice.



Glossopdale Sixth Form

All students have to continue their education or training beyond the age of 16. The benefit of choosing an 11-18 school is that we have a thriving and popular Sixth Form, offering up to 300 students a wide range of academic and vocational courses with brand new state of the art facilities. We have the latest ICT equipment and practical suites for Performing Arts, Science, Creative Digital Media and Art as well as bespoke seminar rooms and communal social and study space.

At Glossopdale our post 16 provision primarily offers courses at level 3 (A Level) and some at Level 2. Courses can be purely academic or vocational or a mixture of both. Some courses have a minimum entry requirement and these can be found in the Sixth Form Prospectus.

The Sixth Form Centre is conducive for deep learning in a supportive atmosphere. Students continue to benefit from our strong pastoral support as well as our links with universities and businesses in the Glossopdale community and throughout Greater Manchester. As with the rest of the school, regular assessment, feedback and supportive intervention gives students clear targets and allows them to take regular ownership of their educational achievements and future career aspirations. Typically students leave our Sixth Form having secured their university courses or apprenticeship pathways and our careers guidance and work experience programme ensures all students are well prepared for their future choices.

Our Sixth Form students play a big part in supporting students in main school through such initiatives as: reading buddies, GCSE subject mentors, running extra curricular activities, supporting school trips, delivering assemblies, sharing advice on exam success and working with students in their lessons. All of these roles serve to teach even the very youngest of our students the benefits of hard work and the importance of being a proactive member of the wider school community.

'Sixth Form students value the help their teachers provide, including personalised targets, that help them to get better at the subjects they study...Sixth Form students develop their understanding of resilience and mental health. They value the information that they receive about their next steps...Students in the Sixth Form talk about the positive and supportive environment they enjoy.'

OFSTED 2023





Glossopdale

School & Sixth Form

Address:

*Newshaw Lane,
Hadfield,
Glossop,
SK13 2DA*

Address:

info@glossopdale.school

Phone:

01457862336

Facebook/X

@GlossopdaleSch

Website

www.glossopdale.school